



Special publication celebrating real estate
award recipients, affordability initiatives,
local housing market analysis, and more!

**DRIVEN BY YOUR DREAMS.
GUIDED BY A CODE OF ETHICS.**



REALTORS® are members of the National Association of REALTORS®.



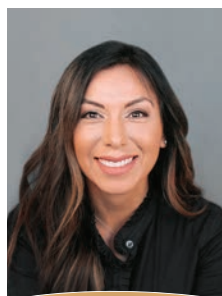


Congratulations to our team!

CBH

Thank you for building dreams every day.

North Canyon Sales Team



DIAMOND

Melissa Enrico

North Canyon Sales Coach
10 YEARS WITH CBH
\$103,587,259 in production



DIAMOND

Kelly Green

Senior Sales Specialist
4 YEARS WITH CBH
\$47,200,746 in production



DIAMOND

Megan Luther

South Canyon Sales Coach
5 YEARS WITH CBH
\$67,680,467 in production



DIAMOND

Jody Baranco

South Canyon Assistant
Sales Coach and the 2021
TOP CBH SALESPERSON
5 YEARS WITH CBH
\$69,947,693 in production

North Ada Sales Team



DIAMOND

Teschia Tucakovic

North Ada Sales Coach
12 YEARS WITH CBH
\$64,238,105 in production



DIAMOND

Jordan Grubbs

Senior Sales Specialist
3 YEARS WITH CBH
\$53,256,253 in production



DIAMOND

Sam Farris

South Ada Sales Coach
9 YEARS WITH CBH
\$78,430,722 in production



DIAMOND

Lonneka Nagle

Sales Specialist
2 YEARS WITH CBH
\$47,167,999 in production



DIAMOND

Christine Comstock

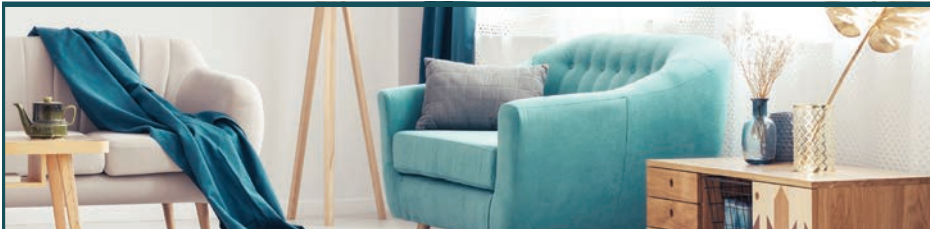
Sales Coach Director
& Associate Broker
15 YEARS WITH CBH
\$56,222,851 in production

South Ada Sales Team

Fearless Leader

You're looking at a sales crew who has been in the industry for over **50** years combined—with over **100** new homes sold each in 2021. This **powerhouse team** has made the dream of homeownership a reality to **1,445 families** last year alone, giving them a place to be safe, make memories and grow. **Thank you for building the dream.** *We love you!*

30 YEARS
LOVING YOU SINCE '92



Your complete home financing solution.

Purchase | Refinance | Renovation | Construction

**Contact us to learn more
about financing options with
Evergreen Home Loans.™**



Sam Newell

Branch Manager / Senior Loan Officer
NMLS 9027
(208) 794-3080

Ana Flores

Loan Officer
NMLS 410664
(208) 697-7423

Alison Gillespie

Branch Production Manager
NMLS 707593
(208) 321-4300

Corey Newell

Loan Officer
NMLS 24591
(208) 571-1892

Kendra Graybeal

Loan Officer
NMLS 924381
(208) 861-7775

208-321-4300

3515 E Overland Road
Meridian, ID 83642

© 2021 Evergreen Home Loans and Evergreen are the trademarks or registered trademarks of Evergreen Moneysource Mortgage Company® NMLS ID 3182. Trade/service marks are the property of Evergreen Home Loans. All rights reserved. Licensed under: Idaho Mortgage Broker/Lender MBL-3134.02/21

COLDWELL BANKER | TOMLINSON

WE ARE GROWING!

Bob Van Allen has announced Michele Molitor as the South Idaho designated broker and vice president. This new partnership with Molitor allows Van Allen to oversee company growth throughout the 14 Idaho and Washington locations while Molitor focuses on South Idaho



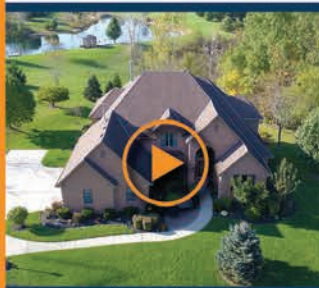
BOB VAN ALLEN
CBT President
Idaho & Washington



MICHELE MOLITOR
Designated Broker &
CBT Vice President
South Idaho

Each Office is Independently Owned and Operated.

PLATINUM LISTING PACKAGE PLUS HDR



Aerial Video / Stills



3D Interactive Tour



Floor Plan

**ONLY
\$99**

for first time customers

This Package Includes:

- 3D Virtual Tour
- Aerial Video & Aerial Stills
- HDR Interior Stills
- Exterior Stills*
- Guided Tour
- Video Slideshow
- 3D Walkthrough
- PDF Brochure Created
- Floor Plan with Dimensions
- Featured Listing on Hommati.com
- Social Media Marketing



24/7
Virtual Tours



We are so confident you will win more listings we are practically giving our package away.

This entire package is less than what you would probably pay for photography alone!

J.C. Carson
(208) 254-5150
Carson@Hommati.com
www.hommati.com/office/210

Subject to applicable sales tax. Listing over 3,500 sq. ft. will be charged a nominal fee per sq. ft. over 3,500. Some services are only available at participating franchise locations. Each franchise is independently owned and operated. * Promotion limited to first-time customers only, who are licensed real estate agents and for single family homes that are for sale. **Exterior photos are captured using drone or single image photography.

Is Boise the Most “Overpriced” Housing Market in the U.S.?



Local market analysis from
Boise Regional REALTORS®
President Becky Enrico Crum



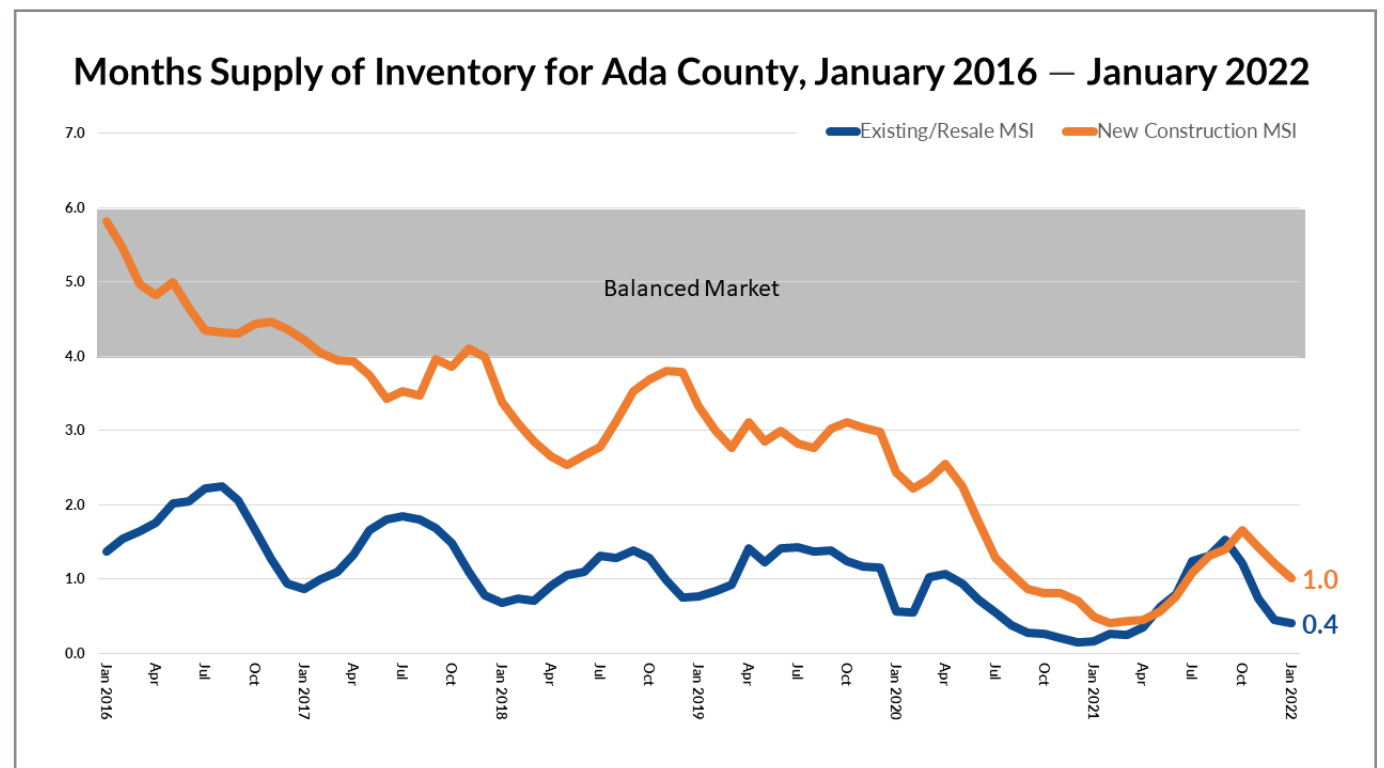
A study published by Florida Atlantic University (FAU) suggested the Boise City Metropolitan Statistical Area was the most “overpriced” housing market in the country, based on the Zillow Home Value Index value outpacing the historical trendline.

The ranking made for some attention-grabbing headlines in both local and national news outlets, but as with any complicated issue, it’s worth understanding the context of the market and the many factors that influence home prices. This is especially true considering the Boise metro has been one of the fastest growing markets across the country for years, both in price and population.

The primary driver of home prices in our area has been the insufficient supply of homes compared to buyer demand. Demand for

homes has been primarily fueled by population growth, migration trends, and increased purchase power due to historically low mortgage rates. The most recent uptick in demand came from people re-thinking how they live and work as a result of the pandemic.

One metric used to illustrate the supply vs. demand relationship is Months Supply of Inventory (MSI), which takes the number of homes for sale divided by the average number of sales by month for the preceding 12 months. As of January 2022, Ada County was at less than two weeks for existing homes and 1.0 month for new construction, meaning, if no additional homes were listed for sale, the supply of homes would run out in less than one month. A balanced market — not favoring buyers or sellers — is typically between 4-6 months of supply.



Continued... Is Boise the Most “Overpriced” Housing Market in the U.S.?

Despite rising prices, historically low mortgage rates have allowed many buyers to continue to purchase homes. The rate for a 30-year fixed rate mortgage was 7.60% in 1997, on average, compared to 2.96% in 2021. To illustrate the impact of rates on monthly payments, say you’re buying a home for \$500,000, with 10% down, and a 30-year fixed rate mortgage. At a rate of 7.60%, your monthly payment would be \$3,177 per month (excluding taxes and insurance) however, at 2.96%, your payment drops to \$1,887 for a savings of \$1,290 per month! While rates depend on an individual’s financial situation, you can see the purchase power that comes along with such low mortgage rates.

In addition, the Boise metro has been one of the fastest growing areas in the country for the past few years, yet our housing stock has not kept pace. According to research from the U.S. Department of Housing and Urban Development (HUD), the Boise metro needs 19,425 additional units of housing, both for purchase and rent, by the end of 2023 to achieve a balanced market.

Not only is our market short on units, but the mix of available housing stock is skewed toward single-family homes, which are often more expensive than multi-family properties, like condos, townhomes, and apartments. According to U.S. Census data, single-family homes make up 84.0% of the housing units in the Boise metro, with the remaining 16.0% being multi-family. This was the highest share of single-family homes among the top five areas in the FAU study, pushing our market to the top of the list.

So, are homes in the Boise metro selling for more today than in the past? Yes.

Have they been selling for over list price? Yes and no. In 2021, 53.3% of homes sold for more than their original list price. The monthly numbers show that the share of existing homes that sold for over list price peaked in July 2021 and have dropped dramatically since then.

Are they overpriced or overvalued? Depends on who you ask.

For example, one buyer may value a home for less than its list price and try to negotiate a lower price with the seller, whereas another buyer may value the same home more than its list price and may be willing to pay more.

BRR strives to provide data-backed analysis and resources to REALTORS® to help them advise their clients. And while it’s helpful to examine the overall trends driving our housing market, individual circumstances and the specifics of a property often outweigh any generalized data or analysis that we can offer. If you’re thinking of making a move, we recommend you consult with a REALTOR® and lender to make sure any real estate transaction is tailored to your unique needs.

Find more market insights and in-depth monthly analysis at boirealtors.com.



25 Years of Building Excellence

Hubble Homes is excited to celebrate 25 years of building new homes throughout the Treasure Valley. Founded in 1997, Hubble Homes has since grown to be one of the largest homebuilders in Idaho, and the U.S.

We are pleased to celebrate this milestone built upon dedicated customer service, excellent working relationships with our Realtor® partners, and a commitment to providing affordable, quality homes. We look forward to helping build the dream of home ownership for many families in the future.

Congratulations to all the Boise Regional Realtors® award winners & top producers. Hubble Homes is proud that you choose and trust us with your clients' new construction needs.

Learn more about us at [HubbleHomes.com](https://www.HubbleHomes.com)
208.433.8800 | Hubble Homes, LLC. RCE-049



There's no place like your very own home.

When the time is right to build, buy or update your home, count on us for financing suited to your needs. We listen, learn and help you achieve your dreams with home, construction, lot loans and more.

Let's create tomorrow, together.
[bannerbank.com](https://www.bannerbank.com)



Crystal McClain

NMLS# 176202
Residential Loan Officer
cmcclain@bannerbank.com
208-869-4100



Jeff Enrico

NMLS# 19784
Residential Loan Officer
jenrico@bannerbank.com
208-866-0320



Ryan Froehlich

NMLS# 461590
VP, Regional Manager
rfroehlich@bannerbank.com
208-514-9664



David Wray

NMLS# 613596
Residential Loan Officer
dwrap@bannerbank.com
208-830-5310

Member FDIC





CIRCLE OF EXCELLENCE TOP PRODUCERS

Boise Regional REALTORS® Circle of Excellence Production Awards recognize REALTOR® members whose production volume reaches defined levels for the year as reported in the Intermountain MLS. Not all members or teams who qualify for a production award are listed. Participants have elected to apply and have submitted the application fee. Net proceeds from these awards will be donated to the REALTORS® Community Foundation to help fund a new housing affordability initiative.

208 Real Estate LLC

Michael Madsen	Bronze
Mary Pethtel	Bronze
Jonathan Newell	Silver
Tracy Skidmore	Silver

A.V. West Real Estate

Charlene Bragg	Bronze
Carmel Crock	Silver
Marta Paulson	Silver

Accel Realty Partners

Krista Coleman	Bronze
Michele de Reus-McCord	Bronze
Jo Short	Bronze
Dan Canfield	Silver
Linda Haar	Silver
Linda L Schlomer	Silver
Ron Minegar*	Gold
Nikolas Buich	Platinum
Sanel Tucakovic	Platinum
Alei Merrill*	Diamond

Amherst Madison

Ronda Brumley-Martin	Bronze
Andrea Hamilton	Bronze
Daniela Ysursa	Bronze
Stacey Bittick	Silver
Sarah Faires	Silver
Matt Kiser	Silver
Lori Otter	Silver
Leslye Park	Silver
Kristin Porter	Silver
Michelle Riipinen	Silver
Katie Shevlin	Silver
Mark Stevens	Silver
Mary Barnett	Gold
Vicky Haban	Gold
Erin Oldham	Gold
Lauren Sawyer	Gold
Tyler Horn	Platinum
Nikki Laughridge	Platinum
Jeffrey Wills*	Platinum
Brandon Wood	Platinum
Ben Zaverukha	Platinum
Denise Abmont	Diamond

Amherst Madison (cont.)

Joe Abmont	Diamond
Katie McFerrin	Diamond
Tifni Pennecard*	Diamond
Julia Shoemaker*	Diamond
Kaitlin Tookey Palmer	Diamond
Matt Weston	Diamond
Casey Wilson	Diamond
Colton Yasinski	Diamond

Andy Enrico & Company Real Estate

Andrea Merrill	Bronze
Becky Enrico Crum*	Platinum

Anfield Realty LLC

Cyndi Uhlenhoff	Bronze
Eric Uhlenhoff	Gold

Asay Real Estate LLC

Suzanne Asay	Bronze
--------------	--------

ASCENT Boise Real Estate

Katie Rosenberg*	Gold
------------------	------

Aspire Realty Group

Nikki Mimms	Bronze
Bo Burrup	Silver

Assist-2-Sell, Buyers & Sellers Realty

Aubrey Emerson	Bronze
Todd Farnum	Bronze
Sean Stimpson	Bronze

Assist-2-Sell, Your Choice Realty

Melissa Beck	Silver
Susan Richelieu	Silver

Atova Inc

Terry Ivins*	Bronze
Lori Venable	Bronze
Sandy Post	Silver
Oscar Cortez	Gold
Valerie J Gray	Gold
Matthew Schweiger *	Gold
Donalyn Allen	Platinum
Taylor Jackson	Platinum

Berkshire Hathaway HomeServices Idaho Realty

Huei-Cheng Lin	Bronze
Antoinette Roth	Bronze
Cathy L Smith	Bronze
Nora Edward	Silver
Gregory Jensen	Silver
Brian Robb	Silver
Marci Rodgers*	Silver
Travis Jensen	Gold
Jamie Westberg	Gold

Berkshire Hathaway HomeServices Silverhawk- Meridian

Lorraine Rubio	Bronze
----------------	--------

Better Homes & Gardens RE 43° North

Dason Alverson	Bronze
Lynn Bonfilio	Bronze
Makenzie Castor	Bronze
Dustin Coe	Bronze
Dianne Dyer	Bronze
Jacqui Irons	Bronze
Kelli Ryan	Bronze
Aryn Sampson	Bronze
Shauna Stewart	Bronze
Deanna Bartlett	Silver
Jennifer Lowe	Silver
Nina Palmer	Silver
Rachel Postigo	Silver
Debbie Smith	Silver
Jason Smith	Silver
Jennifer Bean	Gold
Jessica Doss	Gold
Manda Edge	Gold
Kayla Fearn	Gold
Rebel Ann Mueller	Gold
Wilson Walters	Gold
Joseph Espy	Platinum
Aimee Kane	Platinum
Stacey King	Platinum
Ashley Kirsch	Platinum
Charlie Smith	Platinum
Jason Williams	Platinum

Better Homes & Gardens RE 43° North (cont.)

Tracy Conklin	Diamond
Kerri O'Hara	Diamond
Georgie Pitron	Diamond

Blossom Heights Realty

Rose Sanchez-Prideaux	Gold
-----------------------	------

Boise Home Run Real Estate

Donald R. Cuff	Bronze
----------------	--------

Boise Premier Real Estate

Emily Smith	Bronze
Rachael Uzzel	Bronze
Robyn Baird	Silver
Michele Carrington	Silver
Dana Schafer	Silver
Trayce Ghislain	Gold
Lindsay Johnson	Gold
Kate McGwire	Gold
Jenna Peterson	Gold
Shelley Phillips*	Gold
Jason Andersen	Platinum
Patricia Eckebrecht	Platinum
Kat Gray	Platinum
Richard Head*	Platinum
Brett Hughes	Platinum
Brian Hymas	Platinum
Mike Louie	Platinum
Katrina Severin	Platinum
Jesse Taff	Platinum
Jennifer Hickey	Diamond

C3 Real Estate Investments

Natasha Hawksworth	Bronze
--------------------	--------

Callison Group Real Estate

Dave Kangas	Bronze
Bryce Moss	Silver
Macayla Callison	Gold
Anthony Lewis	Gold
Austin Callison*	Platinum
Thomas Jones	Platinum
Kasey Scroggins	Diamond

Capital Group Inc

Karl Maier	Silver
Samantha Stevens*	Silver
Brent Hrdlicka	Platinum

*Lifetime Production Award Recipient



CIRCLE OF EXCELLENCE TOP PRODUCERS

Boise Regional REALTORS® Circle of Excellence Production Awards recognize REALTOR® members whose production volume reaches defined levels for the year as reported in the Intermountain MLS. Not all members or teams who qualify for a production award are listed. Participants have elected to apply and have submitted the application fee. Net proceeds from these awards will be donated to the REALTORS® Community Foundation to help fund a new housing affordability initiative.

Cardinal Realty Of Idaho	
Semone Grinnell	Silver
CBH Sales & Marketing Inc	
Jody Baranco	Diamond
Christine Comstock*	Diamond
Melissa Enrico	Diamond
Samandra Farris	Diamond
Jordan Grubbs	Diamond
Kelly Green	Diamond
Megan Luther	Diamond
Lonneka Nagle	Diamond
Teschia Tucakovic*	Diamond
CENTURY 21 Eagle Rock	
Vicki Kondracki	Silver
Ruthie Palmatier	Silver
Todd McCauley*	Diamond
Coldwell Banker Tomlinson	
Daniela Baker	Bronze
Don Bergland	Bronze
Kent Conrad	Bronze
Adam Dawson	Bronze
Jason Fletcher	Bronze
Bonnie Harris	Bronze
Christy Lupien	Bronze
Sylvia Maxwell*	Bronze
Fariss McGee	Bronze
Tammy Moody	Bronze
Kevin O'Hara	Bronze
Kent Persons	Bronze
Russell Borgman*	Silver
Liz Carr*	Silver
Kevin Dimmitt	Silver
Craig Ellis	Silver
Ylonda Hays*	Silver
Lisa Hockersmith	Silver
Joan Holmes*	Silver
Kelly Humphry*	Silver
Chris Lyon*	Silver
Anthony Montagnino	Silver
Gail Nussbaum*	Silver
Janis Ogawa*	Silver
Jon Shultz	Silver
Naomi Simmons	Silver
Cindy Zachman	Silver

Coldwell Banker Tomlinson	
<i>(cont.)</i>	
Thomas Caples	Gold
Andy Curry	Gold
Brette Shakespeare	Gold
Kristina Weber	Gold
Jason Winkle*	Gold
Leslie Youra	Gold
Thayne Barrie	Platinum
Edenn Jablonski*	Platinum
Leah Morgan*	Platinum
Jeanie Rae*	Platinum
Dori Wick*	Platinum
Amanda Alvaro*	Diamond
Jaylene Groeniger	Diamond
Brad Minasian*	Diamond
Cook & Company Realty	
Olivia Cook	Silver
Crosswinds Realty	
Stephen Sawyer	Gold
Dickerson Land Group LLC	
Crystal Brown	Bronze
Jerry Dickerson	Bronze
Tera Hudson	Gold
Equity Northwest Real Estate	
April Holland	Bronze
Liz Elfering	Silver
Paige Oeding	Silver
Dennis Fomin	Gold
Joe Panzeri	Gold
Leda Waddle	Gold
Sadie Noah	Platinum
ERA West Wind Real Estate	
Bob Hurtt	Bronze
Ilene Johnson*	Gold
Karen Pestka*	Gold
Nick Cracolice*	Platinum
Evans Realty LLC	
Deborah Anderson	Bronze
Teena Turner*	Bronze
Sherri Darnell	Gold
Matt Heath	Gold

Evans Realty LLC (cont.)	
John Evans	Platinum
Kyle Stratton	Platinum
exp Realty LLC	
Amber Brown	Bronze
Kari Paget	Bronze
Willie Alderson	Silver
Jo Ballagh	Silver
Isaac Chavez	Silver
Jon Shepherd	Silver
Aleja Stacey	Silver
Jeff Christianson	Gold
Anthony Tornetta	Gold
Jonna Weber	Platinum
Fathom Realty	
Tristan Abbott	Bronze
Patti Bowman*	Bronze
Laetitia Campbell	Bronze
Susan Davidson	Bronze
Tiffany Hyatt	Bronze
Shawna Labrum	Bronze
Robyn Moir	Bronze
Kevin Murphy	Bronze
Sara Wolf	Bronze
Janelle Anderson	Silver
Karen Frings	Silver
Mary Ann Helton	Silver
Eric Hofer	Silver
Ruthie New	Silver
Paul Ocampo	Silver
Andrew Yates	Silver
John Zaleski	Silver
Lisa Zeiter	Silver
Alicia Cavener	Gold
Matt Clark	Gold
Jen Clements	Gold
Leslie Hampton	Gold
Misty Kirpach	Gold
Keri Rock Eberhard	Gold
John Schoettger	Gold
Todd Simonson	Gold
Holly Thomas-Mowery	Gold
Andrea Anderson	Platinum
Tim Jessen*	Platinum

Fathom Realty (cont.)	
Faith Mikita	Platinum
Jamie Robb	Platinum
Heather Ferguson	Diamond
Michael Moir	Diamond
Lane Ranstrom	Diamond
First Service Group Real Estate	
Felicia Todd	Platinum
FourPointFive Real Estate Boise	
Cameron Clark	Bronze
Patrick Tilman	Silver
Charity Sigler	Gold
William Tilman	Platinum
Funkhouser Real Estate Group LLC	
Lisa Funkhouser Decker*	Silver
Garden Valley Homes & Land	
Lara Alexander	Gold
Valerie Jones	Platinum
Garden Valley Properties	
Debbie Langer	Bronze
Julie Leslie	Silver
Kathleen Vaughan*	Gold
Toni Palmiotto*	Platinum
Genesis Real Estate	
Shelly R Brinton	Silver
Cindy Niccolls	Silver
Jonathan Long	Platinum
Good Vibes Real Estate	
Okhee Chang	Platinum
Group One Sotheby's International Realty	
Charlene (Char) Burt	Bronze
Liliya Buzey	Bronze
Annie Chalfant*	Bronze
Michaela Coddling	Bronze
Scott Latham	Bronze
John May	Bronze
Erin Mercer	Bronze
Don Rogers	Bronze

*Lifetime Production Award Recipient



CIRCLE OF EXCELLENCE TOP PRODUCERS

Boise Regional REALTORS® Circle of Excellence Production Awards recognize REALTOR® members whose production volume reaches defined levels for the year as reported in the Intermountain MLS. Not all members or teams who qualify for a production award are listed. Participants have elected to apply and have submitted the application fee. Net proceeds from these awards will be donated to the REALTORS® Community Foundation to help fund a new housing affordability initiative.

Group One Sotheby's International Realty (cont.)

Nicole Shackelford	Bronze
Shelley Smith Eichmann*	Bronze
Erica Toffel	Bronze
Teresa Uberuaga*	Bronze
Brandi J Van Etten	Bronze
Charles Weymouth*	Bronze
Richard Wolfe	Bronze
Wendi Bandurraga Roe	Silver
Elizabeth Bravender	Silver
Jody Hinton*	Silver
Megan Larsen	Silver
Patrice Peterson	Silver
Angel Petragallo*	Silver
Deborah Phantana-Angkul	Silver
Joan Roberts*	Silver
Holly Tastad-Pozel	Silver
Julene Webb	Silver
Patricia Cole	Gold
Carey Farmer*	Gold
J. Tyler Gilman*	Gold
Nicole Gouvea	Gold
Sean Hart*	Gold
Angie Heasley	Gold
Debra Hodges*	Gold
Lorri Martindale*	Gold
Jennifer Navest	Gold
Roger Patterson*	Gold
Janet Thompson*	Gold
Ian Brown	Platinum
Andy Elliot*	Platinum
Cyndi Elliot*	Platinum
Eva Hoopes*	Diamond

Guardian Group Real Estate LLC

Riley Wilcox	Gold
--------------	------

Happy Dog Realty Inc

Carolyn Sinnard	Silver
-----------------	--------

Hayden Outdoors Real Estate

Austin Callison	Diamond
-----------------	---------

Heritage Real Estate LLC

Kevin Bridgewater	Bronze
Tami McHugh*	Gold

Homes of Idaho

Julie Beeson	Bronze
Austin Colton	Bronze
Annabelle Diaz	Bronze
Robert Forbes	Bronze
Lisa Gregerson	Bronze
Stacie Harvey	Bronze
Doris Howell	Bronze
Candace King	Bronze
Dusti Magnuson	Bronze
Kelsie Ricks	Bronze
Newell Siler	Bronze
Brittney Stevenson	Bronze
Tona West	Bronze
Amy Buckley	Silver
Debra DeMint	Silver
Kelly Iacovelli	Silver
Amber Johnson	Silver
Linette Kipper	Silver
Colby Lampman	Silver
Andi Ryan	Silver
Andrea Schrader	Silver
Stephanie Stockman	Silver
Carole Deppe	Gold
Dawn Guinard*	Gold
James Newell	Gold
Jamie Schraner	Gold
Crysta McMaster	Platinum
Nikki Owens	Platinum
Angela Mae Schlagel*	Platinum

Hubble Homes LLC

Kenneth Basurto	Diamond
Cheryl Jensen	Diamond
Erika Lopez	Diamond
Erika Magallon	Diamond
Robert Schiers	Diamond

Hunter of Homes LLC

Heidi Gallegos	Silver
Lisa Binggeli	Diamond

Idaho Gem Group Real Estate

Kristine Lee	Gold
--------------	------

Idaho Premier Properties Inc

Eric Prentice	Bronze
Sheryl Stans	Bronze

Initial Point Real Estate LLC

Charles Ham	Bronze
Eleanor Hurst	Bronze
Heather Pedersen	Silver
Jeff Miller	Platinum

J. Kent Erickson Real Estate

Kim Owens	Bronze
J. Kent Erickson*	Gold

Jason Mitchell Real Estate

Carissa Cleveland	Silver
Chase Dolan	Silver

John L. Scott Real Estate

Joe Baldes	Bronze
Dianne Berning*	Bronze
Matthew Cryer	Bronze
Steve Hubble	Bronze
Willie Lafrades	Bronze
Anna Le	Bronze
Tina Pennington	Bronze
Derek Phinney	Bronze
Laura Trairatnobhas	Bronze
Ron Berning	Silver
Lisa M Johnson	Silver
Craig Severson	Silver
Carlos Bendeck*	Platinum
Craig Groves*	Platinum
Henry Groves	Platinum
Ryan Kerfoot*	Platinum
Linzie Sawyer*	Platinum
Michelle Welch	Platinum
Jennifer Horsley-Stacey*	Diamond

JPAR Live Local

Darrin Fuchs	Bronze
Stephanie Alexander	Silver
Morgan Hoffman	Gold
Siena Groshong	Diamond

Keller Williams Realty Boise

Brooke Belanger	Bronze
Gavin Butler	Bronze
Helen Carnie	Bronze
Nicholas Chan	Bronze
Michelle Bailey*	Bronze
Kelsey Cunningham	Bronze
Mike Farris	Bronze

Keller Williams Realty Boise (cont.)

Bonnie Garven	Bronze
Nicole Kendall	Bronze
Wendy Petrucci	Bronze
Giovanna Vincenzi	Bronze
Sheila Wickstrom-Schuler	Bronze
Greg Wooley	Bronze
David Andrews*	Silver
Jennifer Beutler*	Silver
Rosie Bleymaier	Silver
Missy Coman*	Silver
Jocelyn Frascella	Silver
Gabriel Gutierrez	Silver
Jessica Kose	Silver
Thorey Kuzmack*	Silver
Kasandra Henry	Silver
Lisa Holzer	Silver
Karey Hunter	Silver
Rick Larsen*	Silver
Greg MacMillan	Silver
Shannon Metcalf*	Silver
Annie Pechota	Silver
Michele Woods	Silver
Alison Blake*	Gold
Dana Browning	Gold
Jessica D'Orazi	Gold
Antonio Esquivel	Gold
Alana Eyolfson	Gold
Chelsey Fabian	Gold
Clint Foote	Gold
Bryant Forrester*	Gold
Liz Holliday	Gold
Jenna King	Gold
Dan Klinge	Gold
Brenda Mathis	Gold
Lucas O'Neill	Gold
Robert Renteria*	Gold
Nicole Roldan	Gold
Amber Stockert*	Gold
Scott Swan*	Gold
Sarah Berg	Platinum
Lynn Bradescu	Platinum
Monica Braun	Platinum
Allan Brock*	Platinum
Michael Butler*	Platinum

*Lifetime Production Award Recipient



CIRCLE OF EXCELLENCE

TOP PRODUCERS

Boise Regional REALTORS® Circle of Excellence Production Awards recognize REALTOR® members whose production volume reaches defined levels for the year as reported in the Intermountain MLS. Not all members or teams who qualify for a production award are listed. Participants have elected to apply and have submitted the application fee. Net proceeds from these awards will be donated to the REALTORS® Community Foundation to help fund a new housing affordability initiative.

Keller Williams Realty Boise

(cont.)

John Crandlemire	Platinum
Julie Cendejas*	Platinum
Erich Hamm	Platinum
Kimberly Keene	Platinum
Lisa Kohl	Platinum
Mira Maggio Piva	Platinum
Amy Pilotte	Platinum
Heidi Minegar	Platinum
Rob Sower	Platinum
Jace Stolfo*	Platinum
Carolyn Vaught	Platinum
John Van Der Giessen	Platinum
Liz Warner	Platinum
Lysi Bishop*	Diamond
Elizabeth Campbell	Diamond
Alissa Gamble*	Diamond
Tracie McDonald	Diamond
Mandy McLennan*	Diamond
Christina Moore Ward*	Diamond
Dan Myers	Diamond
Kristin Myers*	Diamond
April Rinehart*	Diamond
Van States	Diamond
Arrow Tallman	Diamond

Keller Williams Realty

Southwest Idaho

Shananda Pendleton	Bronze
Connie Clark	Platinum

Knipe Land Company

Curtis Hitchcock	Silver
Janey Knipe*	Diamond
John Knipe*	Diamond

KW Commercial

Gregory Davis	Diamond
---------------	---------

Lazaris Realty

Linda Lazaris	Gold
---------------	------

Lifestyles Property Brokers Inc

Nicolette Kimmel	Bronze
Peach Peterson	Bronze

Lowes Flat Fee Realty

Benjamin Merrill	Gold
------------------	------

Mountain Home Pro Real Estate

Robynn Schipani	Bronze
Marcella Trueba	Silver
Rena Kerfoot	Gold

Mountain Realty LLC

Rochelle Bradley	Silver
Warren Johns	Silver
Young Hoon Lim	Gold
David Wuertz	Platinum

O2 Real Estate Group

Kimberley Buckley	Silver
Lisa Stevenson*	Gold
Kami Brant*	Diamond

Pinnacle Real Estate LLC

William Wright	Bronze
David Jennings	Silver

Ralston Group Properties

Jadyn Berryhill	Bronze
Paige Shafer*	Bronze
Suzanne Bergmann	Silver
Alicia C Ralston	Silver
Amy Berryhill	Gold
Jill Donahue*	Gold

RE/MAX Capital City

Stephanie Perkins	Gold
Jaimee Phillips	Gold
Christina Voyles	Gold
Sheila Smith*	Diamond

RE/MAX Elite Properties

Adam Gustafson	Silver
Paul Vivier	Silver
Kat Allaway	Gold
Callie Williams	Gold
Morey Allaway	Platinum
Easton Napiontek	Platinum

RE/MAX Executives

Lynn Moore	Platinum
Judy Trimble*	Platinum

RE/MAX Town & Country

Anngela Musgrave	Gold
------------------	------

Realty One Centre of Boise Inc

Rachel Glick	Bronze
Leeda Ratliff	Bronze
Brent Dildine	Gold
Michael Tueller	Platinum
Jeff Dildine	Diamond

Realty ONE Group Professionals

Andrew Coleman	Bronze
Sawyer Eckhardt	Bronze
Clare Gaylord	Bronze
Alicia Hobbs	Bronze
Cameron LaTulippe	Bronze
Zachary Lopez	Bronze
Johnathan Melin	Bronze
Sariah Porter	Bronze
Jim Reidenbaugh	Bronze
Bailey Schmidt	Bronze
Blair Schwisow	Bronze
Sandy Stern	Bronze
Sarah Chapman	Silver
Cassie Egbert	Silver
Julie Hess*	Silver
Janelle Coll	Gold
Joshua Connell	Gold
Joel Hess*	Gold
Taylor Schmidt	Platinum

ReDefined Real Estate LLC

Tosha Chapman	Bronze
Jesse Lee	Bronze
PJ Johnson	Bronze
Tracy Thompson	Bronze
Crystal Robinson*	Gold
Erin Madden	Platinum

Redfin Corporation

Melissa Whalen	Bronze
Jessica Perry	Platinum
Kristin Lopez	Diamond
Shauna Pendleton	Diamond

Relocate 208 Real Estate

Rachel Johnson	Bronze
Gregory Meurer	Bronze
Kim Kollmann	Silver
Rebecca Van Camp	Gold

Silvercreek Realty Group

Liz Allen	Bronze
Jeri Anghel	Bronze
Deena Antonucci	Bronze
Shane Davila	Bronze
Brenda Davis	Bronze
Krista Deacon	Bronze
Faye Delbridge	Bronze
Kathy Edmondson	Bronze
Lisa Erickson	Bronze
Richard Frost	Bronze
Lisa Gamble	Bronze
Alison A. Hawes	Bronze
Tom Hicks*	Bronze
Cody Holtrop	Bronze
Christy Hovey	Bronze
Shelby Howard	Bronze
Martha Huber	Bronze
Suzanne Jenkins	Bronze
Tyler Johnson	Bronze
Elisabeth Keeney*	Bronze
AJ Lee	Bronze
Dan Lindsey*	Bronze
Danielle Matkin	Bronze
Larissa Meyer	Bronze
Laurie Mock	Bronze
Glenda (Lay Hua) Phua	Bronze
Mohammad Rahimi	Bronze
Patrick Rice	Bronze
Elizabeth Roberts	Bronze
Donna Rogers	Bronze
Jeremy Rynearson	Bronze
Emily Shultz	Bronze
Mikel Ward*	Bronze
Kyler Wartman	Bronze
Robert White	Bronze
Nichole Wilkinson	Bronze
Carrie Witt	Bronze
Launee Wolverton	Bronze
Butch Amyx	Silver
Rich Arnold	Silver
Kristine Asin	Silver
Lori Bott	Silver
Heidi Bradshaw	Silver
Victoria Brooks	Silver
Kimberly Burns	Silver
Jacob Detweiler*	Silver

*Lifetime Production Award Recipient



CIRCLE OF EXCELLENCE

TOP PRODUCERS

Boise Regional REALTORS® Circle of Excellence Production Awards recognize REALTOR® members whose production volume reaches defined levels for the year as reported in the Intermountain MLS. Not all members or teams who qualify for a production award are listed. Participants have elected to apply and have submitted the application fee. Net proceeds from these awards will be donated to the REALTORS® Community Foundation to help fund a new housing affordability initiative.

Silvercreek Realty Group LLC (cont.)

Christen Fuhrman	Silver
Lacey Gustafson	Silver
Shelly Henry	Silver
Elizabeth Hume*	Silver
Evi Keller	Silver
Hailey Koeppel	Silver
Kim Leatherman	Silver
Tonyah Lee	Silver
Brenda Lovell	Silver
Kelli Lumsden	Silver
Terri Manduca	Silver
Mackenzie Miller	Silver
Burma Naylor	Silver
Raquel Petzinger	Silver
Pamela Pugmire	Silver
Sandee Randolph	Silver
Bill Re	Silver
Jacqueline Rose*	Silver
Tobie Rossi-Medina	Silver
Lea Scrima	Silver
Alexa Slegers Head	Silver
Debra Stearns	Silver
Trent Steffler	Silver
Scott Trefaller	Silver
Erin Volk	Silver
Jennifer Walker	Silver
Jennifer Welch	Silver
Patrick Williamson*	Silver
Carmen Wilson	Silver
Amanda Zander	Silver
Leanna Arnold	Gold
Troy Ashworth	Gold
Rita Braithwaite	Gold
Christian Busnardo	Gold
Tim Coldsnow	Gold
Juniper Cooper-Grivas	Gold
Deseree Dewey	Gold
Sandra Doerty	Gold
Jade Enzler	Gold
Gennie Fishburn	Gold
Laura Gray	Gold
Tabatha Gutierrez	Gold
Sara Hanigan	Gold
Brandon Harrison	Gold
Gretchen Hill	Gold

Silvercreek Realty Group LLC (cont.)

Shannon Holtrop	Gold
Debra Hunemiller	Gold
Shauna Irwin	Gold
Janet Jameyson*	Gold
Brent Johnson*	Gold
Shane Lee	Gold
Cindy Maier*	Gold
Mark Maselli	Gold
Tempe McFarlane*	Gold
Jenna Nash	Gold
Jacque Neef Mayo*	Gold
Diana Reynolds	Gold
Sara Rodewald	Gold
Jay Ross*	Gold
Tamara Rowe	Gold
Cristin Russell	Gold
Daryl Smith*	Gold
Sean Taylor*	Gold
Stanley Tonkin	Gold
Donna Wade	Gold
Hollis Welsh	Gold
Katie Westhara	Gold
Bobby Alexander	Platinum
Mike Brown*	Platinum
Vivian Chan	Platinum
Michael Christianson	Platinum
Jessica Durham	Platinum
Ann Edmark Reed*	Platinum
Kate Gruber	Platinum
Jodi Harada	Platinum
Paul Heim*	Platinum
Kirk Hessing	Platinum
Doug Hofmann	Platinum
Lori Laney	Platinum
Truely Loescher	Platinum
Alex Macdonald	Platinum
Becky Macdonald	Platinum
David Nielsen	Platinum
Andrea Pettitt	Platinum
Darcelle Sander*	Platinum
Kelley Simon*	Platinum
Jackie Verner	Platinum
Susan Weaver	Platinum
Kim Weissinger*	Platinum
Katie Woods	Platinum

Silvercreek Realty Group LLC (cont.)

Mike Barth	Diamond
Marla Berger*	Diamond
Greg Boss*	Diamond
Connie Boyce*	Diamond
Sydney Burtwell	Diamond
Karen Elitharp*	Diamond
Caryn Field-Hector	Diamond
Eric Finn	Diamond
Beth Havlik	Diamond
Kerrylyn Miller	Diamond
Guy Ouwehand	Diamond
Sergio V. Sigmond	Diamond
Janice Stieger*	Diamond

Skyline Realty

Jennifer Aubel	Gold
Sage Hickam	Gold

Smith & Coelho

Pamela Layton	Gold
---------------	------

Stack Rock Realty

Katrina Wehr*	Platinum
---------------	----------

Sweet Group Realty LLC

Winnie M Morton*	Silver
Annie Valentine	Platinum

Swope Investment Properties

Shane Brown	Bronze
Mary Nelson	Bronze
Paige Brown	Silver
Stacy Mcbain	Platinum
Tony Drost	Platinum
Mike Swope	Diamond

Team One Group Real Estate

Michelle Beck	Silver
---------------	--------

Templeton Real Estate Group

Kristine Kittelson	Silver
Deanna Mundy	Gold
Jake Templeton	Gold
Erika Galindo	Platinum
Dawn Templeton*	Diamond

The Brick Group Real Estate

Laree Goodman*	Bronze
Lindsey Hopkins*	Bronze
Alicia Rodman*	Gold

The Smack Group

Ti Smack*	Diamond
-----------	---------

Timber and Love Realty

Jennifer L. Carr	Diamond
------------------	---------

Trail 27

Gage Young	Silver
------------	--------

TripleCord Real Estate

Mark Gould	Bronze
Benjamin Foreman	Silver
Ken Sugarman	Gold
Becka Marston	Platinum
Anna Strausbaugh	Platinum

West Real Estate Group

Nelja Westwood	Silver
Nicole Brushey	Gold
Derek Cassel	Gold
Alex Zayshlyy	Gold
John West	Platinum

Whitetail Properties

Real Estate LLC

John Moyle	Platinum
------------	----------

Windermere Powerhouse Group

Bonnie Burry*	Bronze
Shaina Kennedy	Bronze
Susan Meloy	Bronze
Debbie Jo Pelton	Bronze
Gregory Scrivner*	Bronze
Chrissy Brickner	Silver
Doug Felton	Silver
Molly Mendenhall	Silver
Beth Ritter	Silver
Janine Bastian	Gold
Christa Patton*	Gold
Jennifer Yates	Platinum

Windermere Real Estate

Professionals

Stevi Raff	Bronze
Mindi McAllaster	Gold

Woodhouse Group

Amy Watson	Platinum
------------	----------

*Lifetime Production Award Recipient



CIRCLE OF EXCELLENCE TOP PRODUCING TEAMS

Boise Regional REALTORS® Circle of Excellence Production Awards recognize REALTOR® members whose production volume reaches defined levels for the year as reported in the Intermountain MLS. Not all members or teams who qualify for a production award are listed. Participants have elected to apply and have submitted the application fee. Net proceeds from these awards will be donated to the REALTORS® Community Foundation to help fund a new housing affordability initiative.

208.properties Realty Group	
208.properties Realty Group	Platinum
Accel Realty Partners	
BE Moved Idaho	Silver
Amherst Madison	
Abmont Realty Group	Diamond
Bauscher Real Estate	Diamond
Andy Enrico & Company Real Estate	
Enrico Crum	Platinum
Atova	
Team Devlin Siebertz	Silver
TV Idaho Real Estate	Platinum
Better Homes & Gardens RE 43° North	
Guide Team	Diamond
SLJ Realty	Diamond
Boise Premier Real Estate	
Carey Homes	Silver
Prime Realty	Gold
Waypoint Real Estate Group	Platinum
Callison Group Real Estate	
Callison Group Real Estate	Diamond
Coldwell Banker Tomlinson	
Ernie & Christine Gentile	Silver
The Morgan Team	Platinum
Equity Northwest Real Estate	
Kit Fitzgerald Team	Platinum

Evans Realty LLC	
Teena and John Turner	Silver
exp Realty LLC	
208 Life Real Estate	Platinum
Jonna Weber Real Estate	Platinum
The Real Estate Dream Team	Platinum
Fathom Realty	
Bowman Group	Silver
Yates & Abel Real Estate Partners	Silver
Jessen Real Estate	Gold
Beacon Real Estate	Diamond
Group One Sotheby's International Realty	
Helen Law Real Estate Team	Silver
Kim & Ed Davis	Gold
Hayden Outdoors Real Estate	
Hayden Outdoors Real Estate	Diamond
Homes of Idaho	
Blakely Real Estate Group	Silver
Focus Realty Idaho	Silver
Lampman Team- Doug & Debbie Lampman	Silver
Newell Realty Group	Platinum
J. Kent Erickson Real Estate	
J. Kent Erickson	Gold
John L. Scott Real Estate	
Key to Life Realty Group, LLC	Gold

Keller Willilams Realty Boise	
First Class Real Estate	Silver
Idaho Forever Real Estate	Silver
Puccio & Company	Silver
Alison Blake Group	Gold
Oliver O'Gara Real Estate	Gold
Scott Swan Real Estate	Gold
The Good Life Group	Gold
208 Houses, LLC	Platinum
Ben Kinney Team Boise	Platinum
Boise Guru	Platinum
Front Porch Properties	Platinum
Minegar Gamble Real Estate	Platinum
We Know Boise	Platinum
Christina & Company	Diamond
Lysi Bishop Real Estate	Diamond
Own Boise	Diamond
Pinnacle Real Estate	
Pinnacle Real Estate	Silver
Ralston Group Properties	
The Berryhill Team	Gold
RE/MAX Capital City	
Sheila Smith Real Estate Group	Diamond
Realty ONE Group Professionals	
Idaho Properties	Gold
Good News Realty Group	Platinum
ReDefined Real Estate	
Zen Real Estate Group	Platinum

Redfin Corporation	
Redfin	Diamond
Silvercreek Realty Group LLC	
HRG Hunemiller Realty Group	Gold
Jay Ross And Mike Scott	Gold
Meridian Boise Real Estate	Gold
Taylor Jade Real Estate Group	Gold
Boise Group	Platinum
Juniper Realty Group	Platinum
New View Real Estate Team	Platinum
Real Estate Counselors	Platinum
Your Boise Realty Group	Platinum
Adam Alexander Real Estate	Diamond
Platinum Idaho Real Estate	Diamond
The Mike Brown Group	Diamond
Templeton Real Estate Group	
Templeton Real Estate Group	Diamond
Trail 27	
Trail 27	Gold
TripleCord Real Estate	
Team Gould Boise	Silver
West Real Estate	
West Real Estate	Diamond
Windermere Real Estate Professionals	
The Flanary Group	Silver



CONGRATULATIONS TO OUR 2021 TOP PRODUCERS!



Brad Minasian
208.866.3254



Rick McGraw
208.880.8889



Amanda Alvaro
208.850.7070



Leah Morgan
208.859.5546



Jaylene Groeniger
208.949.1863



Thayne Barrie
208.870.1885



Edenn Jablonski
208.869.2388



**Lindsey & Scott
Dykstra**
208.871.1133



Steve & Vikki Mattis
208.761.4058



Janie Hall
208.869.7175



Jeanie Rae
208.871.3429



Brette Shakespeare
208.899.1861



Elijah McNeely
208.391.1010



Dori Wick
208.869.0282



Jeanne Vogt
208.353.2580



Tom Caples
208.789.8081



Kristina Weber
208.401.8339



Ylonda Hays
208.571.4430



Jason Winkle
208.631.2558



Rich Smith
208.794.5051



**Ernie & Christine
Gentile**
208.921.2970



**Doug & Joan
Johnston**
208.866.7788



Jonathan Langston
435.229.2475



Andy Curry
208.989.6884



Herb Prandl
208.989.5730



**Jesus & Kendra
Gonzalez**
208.421.8144



Leslie Youra
208.713.7128



**Russ & Sunny
Borgman**
208.412.5106



Rex Tedeski
208.407.9507



Paul Hudson
208.859.4600



Shawna Ray
208.724.2966



Lisa Hockersmith
208.859.6517



Joan Holmes
208.869.2354



Kevin Dimmitt
208.960.8454



Craig Ellis
208.949.0492



Chris Lyon
208.866.7301



Janis Ogawa
208.866.2081



Gail Nussbaum
208.989.2335



Margie Schroeder
208.941.3060



Jared Cozby
208.830.3715



**Kelly & Taj
Humphry**
208.340.7680



Anthony Montagnino
208.870.3617



Liz & Greg Carr
208.866.6512



Tammy Moody
208.695.1623



Jon Shultz
208.761.2047



Naomi Simmons
818.652.1308



Brittany Petronek
208.850.8753



Deb Clough
208.308.8453



Chrissy Smith
208.720.2981



David Wesely
208.861.0444



Travis Adams
208.353.0080



Enoch Worth
208.249.0079



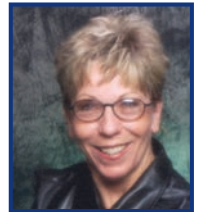
Don Bergland
208.901.6076



Jason Fletcher
208.398.9824



Mark Sever
208.989.7104



Sylvia Maxwell
208.859.0128



Sharaun Covell
208.447.8147



Fariss McGee
208.484.8933



Anna Hatfield
208.484.6712



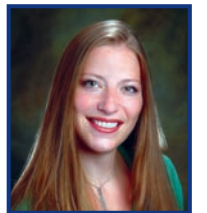
Adam Dawson
208.790.1162



Bonnie Harris
208.703.9602



**Bonnie & Kevin
O'Hara**
208.890.6111



Elyse Allen
208.283.7813



Lori & Jim Stevens
208.794.9331



Theresa Laird
208.919.0350



Jessica Guerrero
208.602.8695



Dani Baker
208.573.2463



Mark Homme
208.724.8489



Ron Stevens
208.340.5380



Kim Porter
208.447.0625



Kent Persons
208.602.0650



Stacey Dude
208.800.9310



Rick Thurber
208.870.3313

#DREAMBIG
#BEBOLD
#LIVEBLUE



**COLDWELL BANKER
TOMLINSON**

John L. Scott® | REAL ESTATE

Congratulations to our 2021 Top Producers!



Jennifer Horsley-Stacey
Diamond



Linzie Sawyer
Platinum



Michelle Welch
Platinum



Henry Groves
Platinum



Ryan Kerfoot
Platinum



Carlos Bendeck
Platinum



Mike Pennington



Lisa Johnson
Silver



Ron Berning
Silver



Craig Severson
Silver



Anna Le
Bronze



Joe Baldes
Bronze



Matt Cryer
Bronze



Laura Triaratnobhas
Bronze



Tina Pennington
Bronze



Steve Hubble
Bronze



Diane Berning
Bronze



Willie Lafrades
Bronze



Derek Phinney
Bronze



Linh Ha



Key to Life
Team Gold



Download our GPS home search mobile app

www.JLSBoise.com | 208-323-4000

LIVING LIFE AS A CONTRIBUTION™

John L. Scott BOI • This office independently owned and operated 

REALTORS® Grant \$52,000 to Local Non-Profits



Members of the 2021 REALTORS® Community Foundation Board present a \$10,000 check to the Boise Public Schools Foundation.

Throughout 2021, the REALTORS® Community Foundation focused its volunteer and fundraising efforts in support of four housing-related non-profits, culminating in grants of \$10,000 each to CATCH, Inc., Jesse Tree, Life's Kitchen, and the Boise Public Schools Foundation.

Additionally, grants were awarded to Boise Rescue Mission Ministries, the Emmett Valley Friendship Coalition, the Idaho Diaper Bank, the Idaho Veterans Chamber of Commerce, Jannus, Mountain Home Parks and Recreation, and the Recreation Foundation of Elmore County, for a total of \$52,000. Since its inception, the Foundation has provided over \$1.8 million in grants to local non-profits. Learn more about the Foundation and make a donation at boirealtors.com/connect/foundation.



The Boise Regional REALTORS® Honor Society recognizes members who are active in the community, in local, state, and national association leadership, and who have earned designations and attended REALTOR® conferences. After 10 years in the Honor Society, members are given lifetime status.

Learn more at boirealtors.com/honor-society.

Elizabeth Allan-Hodge*
Amanda Alvaro*
Michelle Bailey*
Cherie Barton*
Jan Bergesen*
Ron Bishop*
Darlene Blakeslee*
John Blakeslee*
Patricia Bowman*
Connie Brown Olson*
Barbara Burnell*
Bonnie Burry*
Isaac Chavez
Maurice Clifton*
Anita Corbett*
Barb Crowell*
Scott Crum*
Barbara Dawson*

Michele de Reus-McCord
Krista Deacon
Julie DeLorenzo*
Sharron Domeny*
Ann Edmark-Reed*
Andy Enrico*
Linda Enrico*
Becky Enrico Crum*
John Evans*
Carey Farmer*
Nancy Fields*
Kit Fitzgerald*
Daniel Frison*
Mike Gamblin*
Barb Gestrin*
Vicky Haban
Christian Hansen*
Gail Hartnett*


Shirley Hicks*
Lee A. Hill*
Dale Hoyd*
Elizabeth Hume
Michael F. Hummel*
Edenn Jablonski*
Doris Jenkins*
Steve Jensen*
PJ Johnson
Irene Johnston*
Robert Jones*
Dave Kallas*
Louise Kelly*
Rena Kerfoot
John Knipe*
Helen Law*
John Lindbloom*
Garret Longstreet*

Darlene Manning*
Heidi McBean*
Ron Minegar*
Phil Mount
DyAnne Nichols-Bermensolo*
Sadie Noah
Janis Ogawa*
Lori Otter
Roger Patterson*
Jim Paulson*
Peach Peterson
JoAnn Rice*
Jim Ripley*
Pierce Roan*
Margaret Robnett*
Jacqueline Rose*
Katie Rosenberg*
Gary Salisbury

Ann Samuelsen*
Sharon Schindler*
Angela Mae Schlagel
Gene Strate*
Via Surmelis*
Scott Swan*
Holly Thomas-Mowery
Shaun Tracy*
Teena Turner*
Tempe McFarlane*
Teresa Uberuaga*
Kathleen Vaughan
Susan Weaver
Katrina Wehr*
Kim Weissinger
Jeffrey Wills
Daniel Wycherly*
Cindy Zachman

*Lifetime Status

✓ Conventional ✓ VA ✓ Jumbo ✓ FHA ✓ USDA | RD ✓ IHFA





Let us help you finance your dream home!

We helped **1,255 families** achieve their home buying dream in 2021

HOME
sweet
LOAN

Apply quickly & easily anywhere with our app, S1 Connect!

 Real-time status notifications throughout the loan process

 Local processing, underwriting and funding

Contact Us Today To Get Started!

Branch Address: 2025 E. Riverside Dr., Suite 240 | Eagle | ID | 83616 S1L.com/branch/eagle/

Synergy One Lending, Inc. NMLS 1907235. 3131 Camino Del Rio N 150, San Diego, CA 92108. Toll Free #: (888) 995-1256. Synergy One Lending, Inc. is licensed in the following states: AK, AL, AR, AZ, CA- Licensed by the Department of Financial Protection and Innovation under the California Finance Law License., CO, CT, DC, DE, FL, GA- Georgia Residential Mortgage Licensee., HI, IA, ID, IL- Illinois Residential Mortgage Licensee., IN, KS, KY, LA, MA- Licensed by the Massachusetts Division of Banks as a Broker and Lender as #MC1907235, MD, MI, MN, MO, MS, MT, NC, ND, NE, NH, NJ- licensed by the N.J. Department of Banking and Insurance, NM, NV, OH, OK, OR, SC, SD, TN, TX, UT, VA, WA, WI and WY. All Loans are Subject to Credit and Property Approval. Equal Housing Lender. www.nmlsconsumeraccs 511012255

REALTORS® Advocate on Behalf of Buyers, Sellers, and Communities

Real estate is a unique investment as it provides shelter and is an effective way to build wealth, which REALTORS® have the privilege to see first-hand with their clients. Helping people navigate a real estate transaction with huge financial and emotional significance is both challenging and highly rewarding. The positive impact homeownership has on people's lives is the reason so many REALTORS® invest their time and money in the REALTOR® Party, a non-partisan alliance that works to protect private property rights.

To do this, REALTORS® engage with elected officials at the local, state, and national levels, constantly watching for legislation that could impact private property rights, homeownership, and real estate transactions.

Locally, Boise Regional REALTORS® (BRR) makes sure the voices of REALTORS® and homeowners are heard when decisions are being made at city councils and county commissions throughout the region. A recent example of this includes BRR providing critical feedback to the City of Boise's proposed short-term rental licensing ordinance, which created concerns around future restrictions on property rights.

At the state level, Idaho REALTORS® successfully advocated for real estate to be considered an essential business during the shutdown in March 2020, allowing necessary transactions to proceed. The examples we heard from REALTOR®

members included a woman who found the courage to leave an abusive relationship and needed to move her two young children to a safer home; an elderly couple that needed to downsize after a significant financial hardship; and, a group of siblings who had to sell their family home to cover the costs at a senior living facility for their mother.

In addition to working directly with elected leaders on policy and legislation, REALTORS® also seek to better the community through grants to local non-profits. Through the REALTOR® Party, BRR has provided more than \$200,000 to support initiatives within the Boise and West Ada School Districts, Boise State University, the Intermountain Fair Housing Council, and Idaho Smart Growth, among others.

Learn more at boirealtors.com/advocacy/advocacy-news, and if you would like to find out how you can personally get involved in advocating for private property rights, visit homeownershipmatters.realtor.



REALTORS® from all over the state met with officials from the executive, judicial, and legislative branches of state government on February 1, 2022. Photo courtesy of Idaho REALTORS®.

Thank you to the 2021 REALTOR® Party Major Investors!

HALL OF FAME

Michelle Bailey
Isaac Chavez
Krista Deacon*
Julie DeLorenzo*
Carey Farmer*
Kit Fitzgerald*
Craig Groves*
Gail Hartnett*
Shirley Hicks
Georgia Meacham*
Phil Mount*
Gary Salisbury
Katrina Wehr
Jeff Wills*

PLATINUM R INVESTOR

Michelle Bailey
Craig Groves*
Lori Otter
Katrina Wehr
Jeff Wills*

GOLDEN R INVESTOR

Carlos Bendeck*
Krista Deacon*
Julie DeLorenzo*
Carey Farmer*
Kit Fitzgerald*
Vicky Haban
Gail Hartnett*
Elizabeth Hume*
Jeff Martel*

Georgia Meacham*
Phil Mount*
Breanna Vanstrom*
Susan Weaver*

CRYSTAL R INVESTOR

Isaac Chavez
Ronda Conger
Liam Spencer

STERLING R INVESTOR

Jason Andersen
Andrea Anderson
Matthew Bauscher
Lysi Bishop*
Scott Bishop*
Yuri Blanco

Lynn Bradescu
Julie Cendejas
Glenn Christoph
Steve Cox
Josh Cummings
Michele de Reus-McCord*
Andy Enrico
Becky Enrico Crum
John Evans
Michael Gamblin
Kelly Green
Pamela Grove
Henry Groves
Chelsea Hough
Bob Hurtt
Laura Jensen
PJ Johnson
Cameron Kinzer
Kris Miller

Michael Moir
Deborah Myers
Cindy Poulsen
Deborah Pruet
Alicia Reinhard
Gary Salisbury*
Julie Schott
Craig Severson
Tamra Sims
Kimberly Sitton*
Ed Sperry
Eva Steinwald
Scott Swan
Bob Van Allen
Kim Weissinger
Cindy Zachman

* President's Circle Members



REALTOR® Party investment information is only intended for members of the National Association of REALTORS®.

Choose a Mortgage Company
Who Won't Keep You

IN THE DARK!



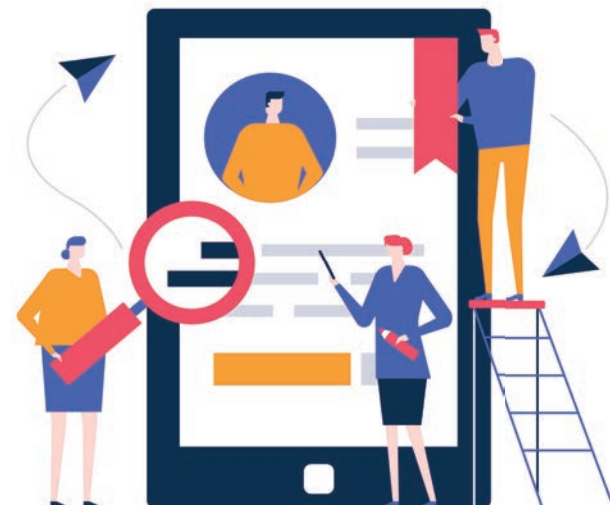
You can trust FAIRWAY to provide you
with the SPEED and SERVICE you
deserve during the home loan process.

CONTACT US TODAY!

Interested in a real estate career?

Find local opportunities on
Boise Regional REALTORS® Career Center.

careers.boirealtors.com





A homebuying partner you can count on

Your financial strategy is unique. Explore your mortgage options with an experienced team dedicated to achieving your goals.

- U.S. Bank lending available in all 50 states
- Leadership of a national lender; dedication of a local partner
- On-time closing as our top priority
- Start a simple, smart and secure online loan application
- Loan options for your needs to buy, build or borrow

Visit mortgage.usbank.com to find a local U.S. Bank mortgage loan officer.



Loan approval is subject to credit approval and program guidelines. Not all loan programs are available in all states for all loan amounts. Interest rates and program terms are subject to change without notice. Visit usbank.com to learn more about U.S. Bank products and services. Mortgage, home equity and credit products are offered by U.S. Bank National Association. Deposit products are offered by U.S. Bank National Association. Member FDIC. ©2022 U.S. Bank 452502c 2/22

SPOTLIGHT WILL GET YOU TO THE FINISH LINE!

**OFFERING CLIENTS EXCLUSIVE ACCESS TO
NEW COMMUNITIES, DEVELOPMENTS, LISTINGS AND RENTALS**

**IF YOU AIN'T
FIRST
YOU'RE LAST**



**BUY
BUILD
BOISE**

WWW.BUYBUILDBOISE.COM



REALTORS® Announce \$350,000 Gift to LEAP Housing Trust to Fund New Affordable Homes and Rentals

The Boise Regional REALTORS® Community Foundation, Boise Regional REALTORS®, and Intermountain MLS have committed to donate \$350,000 to the LEAP Housing Trust over the next few years, to support the development of affordable homes in Ada, Elmore, and Gem counties. BRR's Circle of Excellence recipients, featured in this publication, supported this effort, as the net proceeds from the awards program will be contributed to the donation.

LEAP's Housing Trust helps more people achieve the dream of home, by creating affordably priced purchase and rental opportunities.

“In our work with prospective homebuyers, REALTORS® are keenly aware of the lack of affordable housing available throughout our region,” said Shannan Berry, 2022 President of the REALTORS® Community Foundation. “While we have provided more than \$1.8 million in grants to various non-profits since 1995, this will be our largest gift to one organization.”

Falcon's Landing — a multi-family project in Mountain Home — recently submitted applications for grants and is in the funding phase, and a project in Emmett is in the feasibility phase.

Becky Enrico Crum, 2022 President of Boise Regional REALTORS®, said “LEAP's Housing Trust was chosen for this gift not only because of what they build, but

by doing so, they provide more options to help people achieve the dream of homeownership.”

“We are excited to provide a multi-year donation from the REALTORS® and IMLS to support the construction of homes in Ada, Elmore, and Gem counties,” said Bob Hurtt, 2022 President of Intermountain MLS. “In Boise, for example, the Taft Street Homes project is in the pre-construction phase with plans to break ground in a few months.”

“We have navigated the housing crisis by partnering with groups across multiple sectors; municipalities, health providers, religious organizations, and now real estate,” said Founder and CEO of LEAP Housing, Bart Cochran. “The support of our real estate community is essential if we are going to identify available land and provide innovative solutions to combat the affordable housing crisis we see today in the Boise Metro Area.” There are still opportunities to help LEAP and further their work throughout the region. Financial and land gifts are both welcome, and they can be made by visiting leaphousing.org.



Site of Taft Street Homes, a LEAP Housing Development. Pictured in photo (from left to right): Becky Enrico Crum (2022 BRR President), Glenn Christoph (IMLS CEO), Shirley Koch (2021 IMLS President), Breanna Vanstrom (BRR CEO), Jeff Wills (2021 BRR President), Shannan Berry (2022 Foundation President), Bart Cochran (LEAP CEO), and Gary Salisbury (2021 Foundation President).

PERFECT LOT, PERFECT PLANS?

We've got a loan for that!

Building a new home should be fun, not a hassle. Finding the perfect lot, the right house plan, and choosing colors can cause stress – but your financing shouldn't.

At First Federal Bank, we've simplified the construction lending process with our Construction-Permanent loans. *You'll have one loan, one set of closing costs, and one financing rate through the entire process.*

If your ready to go from lot to home with one loan, stop in to your closest branch, give us a call, or visit BankFirstFed.com and apply today!



(208) 985-2555

1880 S. Eagle Road & 6351 N. Fox Run Way, Meridian

All credit products subject to approval. Institution NMLS#402963



Member
FDIC



Congratulations to
this year's
Circle of Excellence
award recipients

SAVE
THE
DATE

FRIDAY, MAY 20
2022 IMLS TECH & TRAINING FAIR

**FIND THE LOCAL
PROS YOU NEED!**



**DOWNLOAD
THE BRR CONNECT
APP AND SAVE ON HOME
SERVICES!**



DELETE DISCRIMINATION



CC&R Amendment
Grant Program

2001001295

(c) The Board of Directors may fix the annual assessment at an amount not in excess of the maximum.

Section 4. Uniform Rate of Assessment. Both annual and special assessments must be fixed at a uniform rate for all Lots. Assessments may be collected on a monthly, quarterly, or annual basis at the discretion of the board.

Section 5. Special Assessments for Capital Improvements. In addition to the annual assessments authorized, above, the Association may levy, in any assessment year, a special assessment applicable to that year only for the purpose of defraying, in whole or in part, the cost of any construction, reconstruction, repair, or replacement of a capital improvement upon the Common Area, including fixtures and personal property related thereto, provided that any such assessment shall have the assent to two-thirds (2/3) of the votes of the members who are voting in person or by proxy at a meeting duly called for this purpose.

Section 6. Notice and Quorum for Any Action Authorized Under Sections 3 and 5. Written notice of any meeting called for the purpose of taking any action authorized under Section 3 or 5, above, shall be sent to all members not less than 10 days nor more than 50 days in advance of the meeting. At the first such meeting called, the presence of members or of proxies entitled to cast forty percent (40%) of all the votes of the total membership shall constitute a quorum.

No one should have to find discriminatory language in their homeowner's association CC&Rs.

Delete Discrimination is a CC&R amendment grant program offered by Boise Regional REALTORS®, Inc.

The program offers HOAs a grant of up to \$1,000 to offset the cost of amending their documents to remove discriminatory provisions in violation of the Act. Learn more at boirealtors.com/delete-discrimination.