



Jenny Hemly  
Idaho Commerce  
Boise Regional REALTORS Housing Summit  
June 23, 2016





[NEWS/EVENTS](#)

[IDAHO.GOV](#)

[CONTACT](#)

[ABOUT](#)



[TRANSLATE](#)



[SITE SEARCH](#)



[IDAHO  
BUSINESS](#)

[INCENTIVES &  
FINANCING](#)

[SITE SELECTION](#)

[BUSINESS  
CLIMATE](#)

[COMMUNITIES](#)

[TOURISM  
RESOURCES](#)

[IDAHO MAP](#)



#2 FOR MOST SMALL  
BUSINESS-FRIENDLY  
STATES

*Governing, 2014*

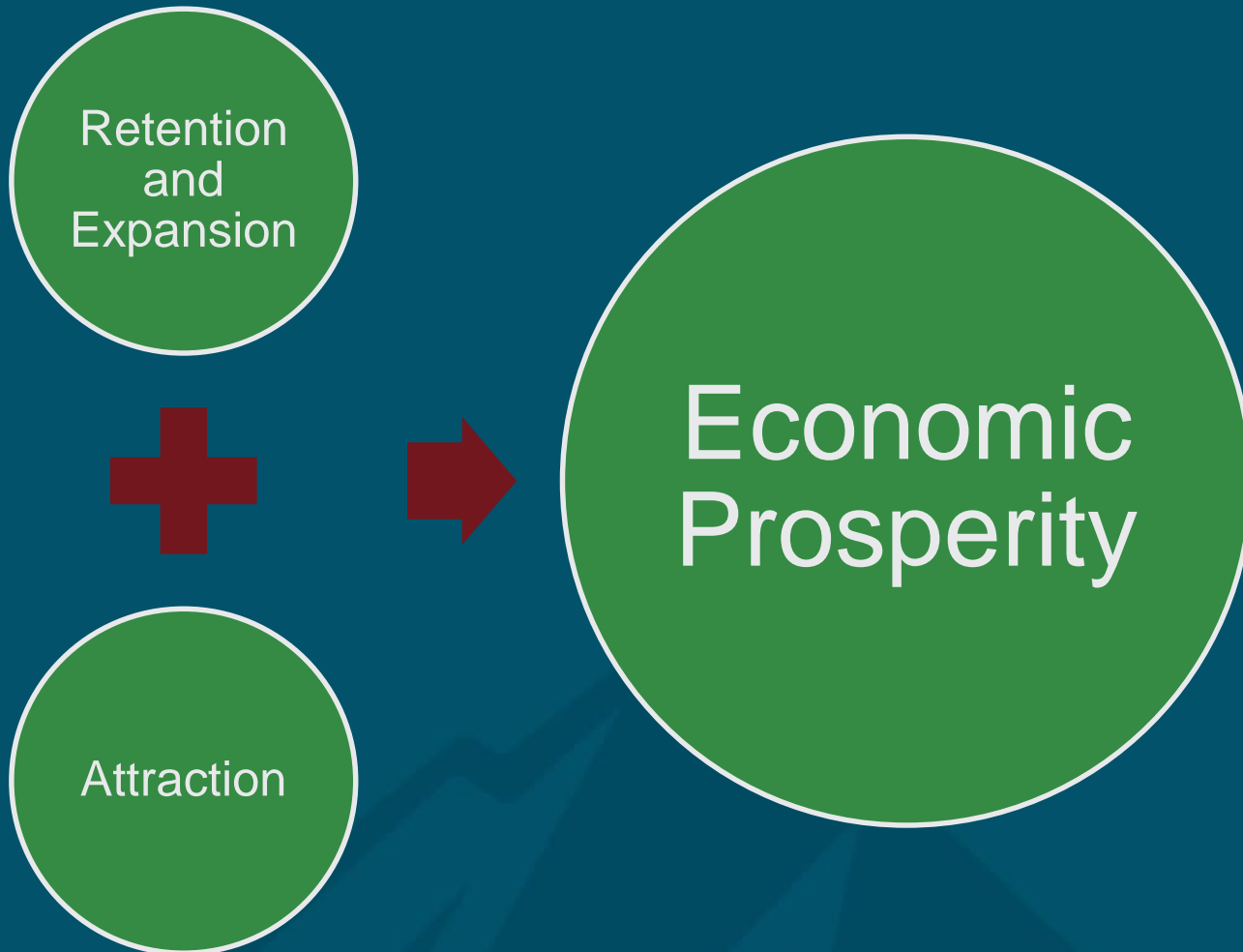
Running at the speed of business



# Idaho Commerce Business Attraction

Our mission is to provide superior consultative services to companies with expressed interest in relocating or expanding their business to Idaho thus increasing diverse investment and enhancing the quality of employment for the state.

# Economics 101



# Rapid Response Team

In an effort to “Accelerate Idaho” and expand career opportunities for Idaho citizens, Governor C.L. “Butch” Otter established an interagency rapid response team responsible for collaborating quickly and efficiently when businesses are interested in launching, growing or relocating in Idaho

# 2016 Silver Shovel Award

“Idaho has one of the lowest unemployment rates in the country — about 3.8 percent in April 2016 — due in part to a well-diversified economy and a booming construction market.” *Area Development Magazine*

# Chobani Success



# Manufacturing Designation

2015



Food Manufacturing Community Designation  
U. S. Commerce Department



# AMERICA'S BEST COMMUNITIES

## MEET THE FINALISTS

Eight finalists have been chosen by an elite panel of judges at the America's Best Communities Summit, they will receive \$100,000 to begin making their visions a reality.

Sponsored by



# 18 Summers Campaign Wins Prestigious Effie Award

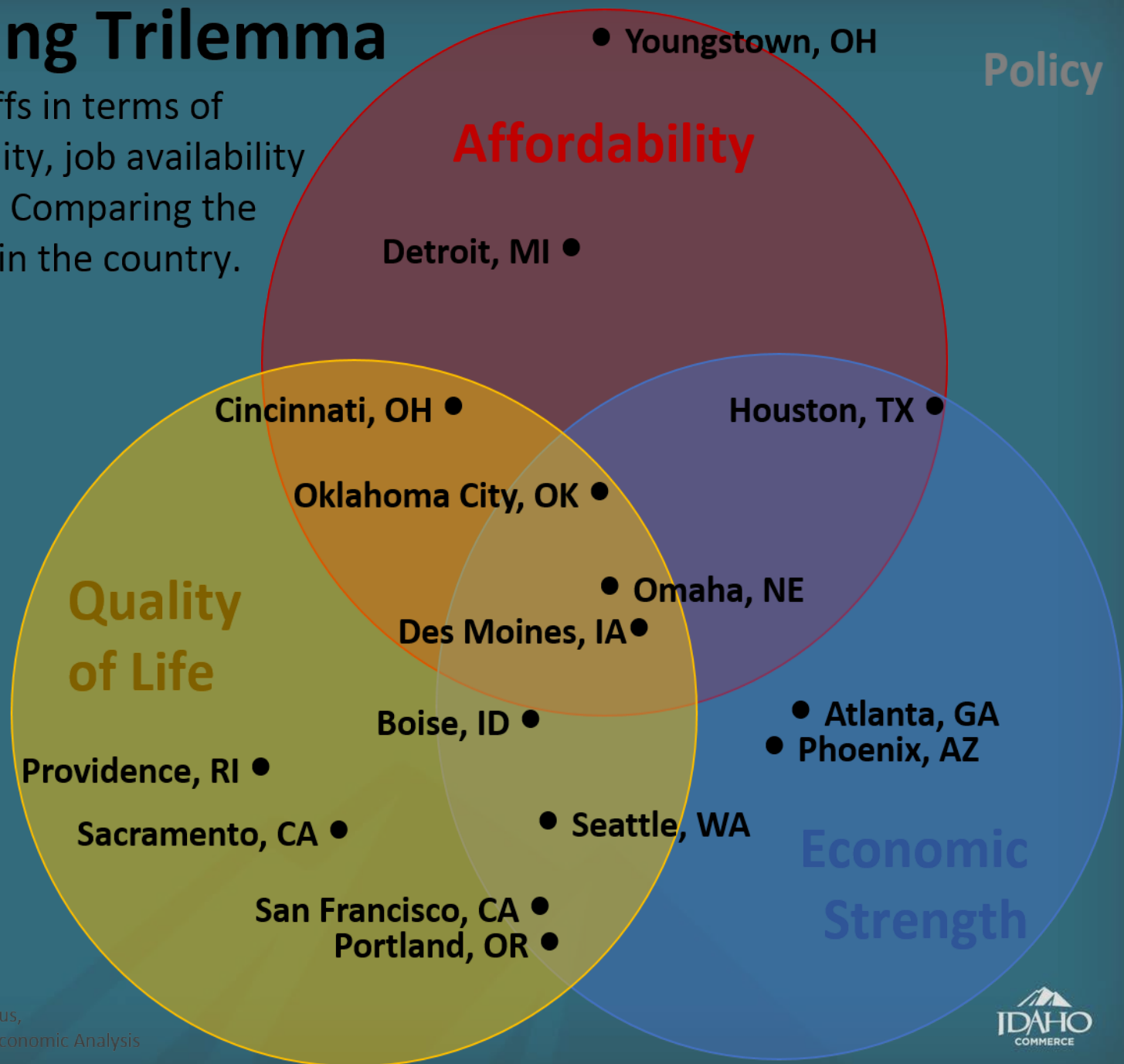


# Boise Rankings

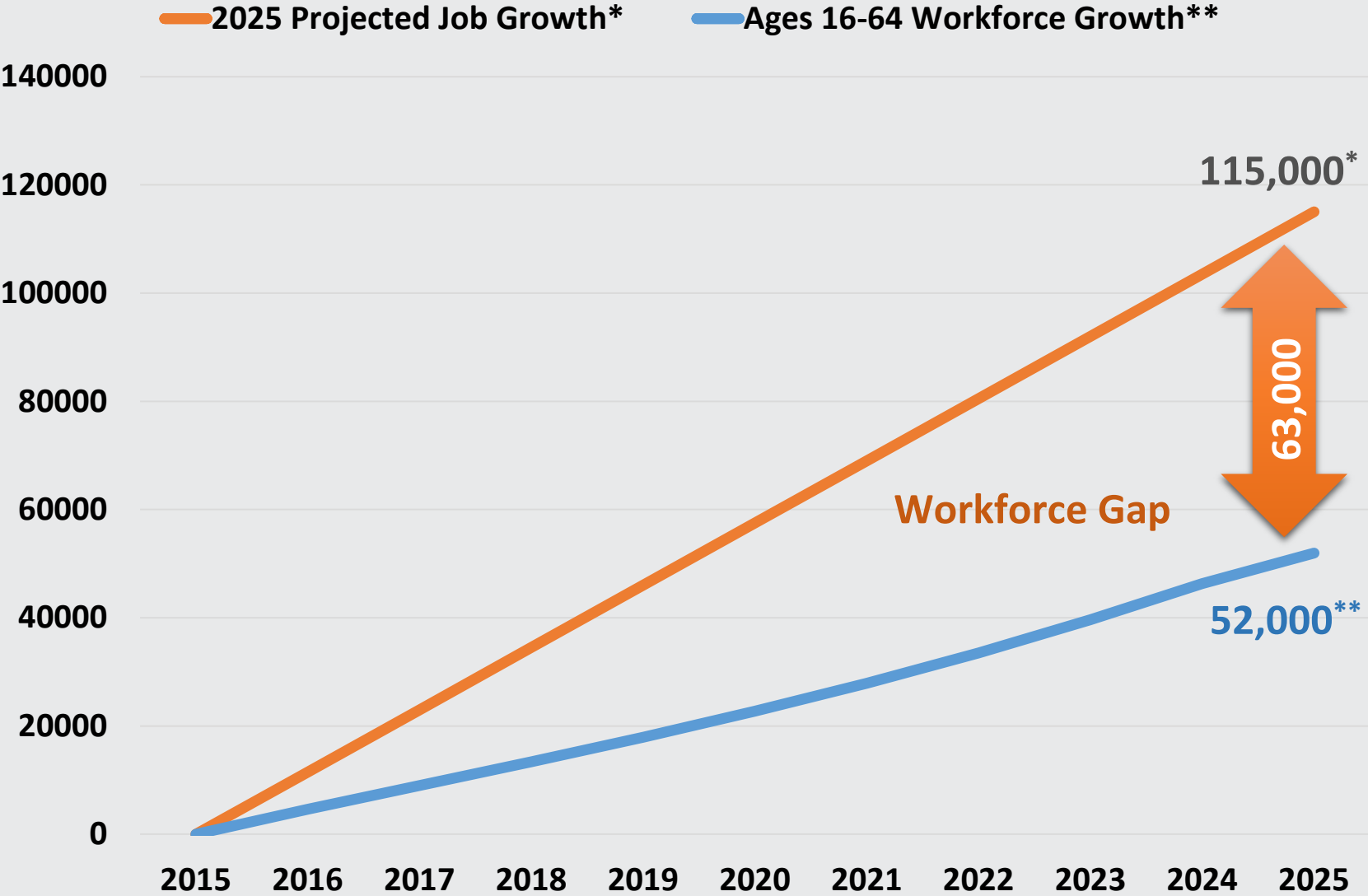
- #1 Lowest Cost Metro in Pacific U.S.
  - KPMG Competitive Alternatives April 2016
- #6 Best Place to Live
  - U.S. News & World Report March 2016
- Top 10 Hottest Housing Markets of 2016
  - Zillow January 2016
- Top 20 Americas Fastest Growing Cities
  - Forbes March 2016
- Top 20 Best Cities for Finding a Job in 2016
  - Business Insider

# The Housing Trilemma

Cities face tradeoffs in terms of housing affordability, job availability and quality of life. Comparing the 100 largest MSAs in the country.



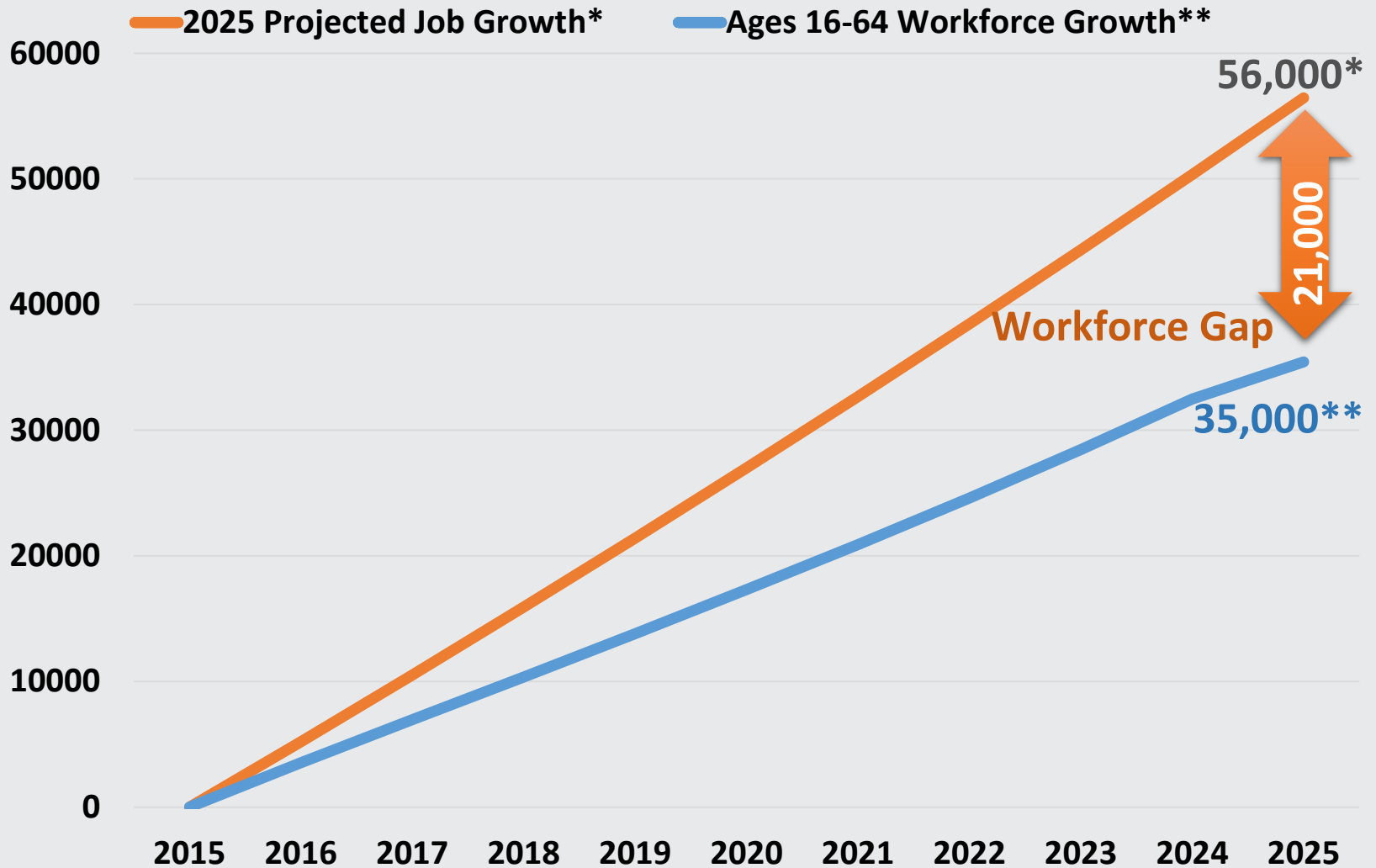
# Idaho



\* 2015-2025 Extrapolated from 2012-2022, 1.5% annualized long term projection growth, Idaho Department of Labor, November 2015

\*\* Workforce growth extrapolated from 1.6% annualized population growth, Idaho Department of Labor, November 2015

# Boise MSA



\* 2015-2025 Extrapolated from 2012-2022, 1.8% annualized long term projection growth, Idaho Department of Labor, January 2016

\*\* Workforce growth extrapolated from 2.1% annualized population growth, Idaho Department of Labor, January 2016



**TOTAL  
POPULATION  
1.65M**

The total population of State of Idaho is 1,654,005. The median age is 38.94.



The population in State of Idaho has grown 5.51% since 2010.



Age Distribution



# Gem State Prospector Data



**TOTAL  
POPULATION**  
**739,754**

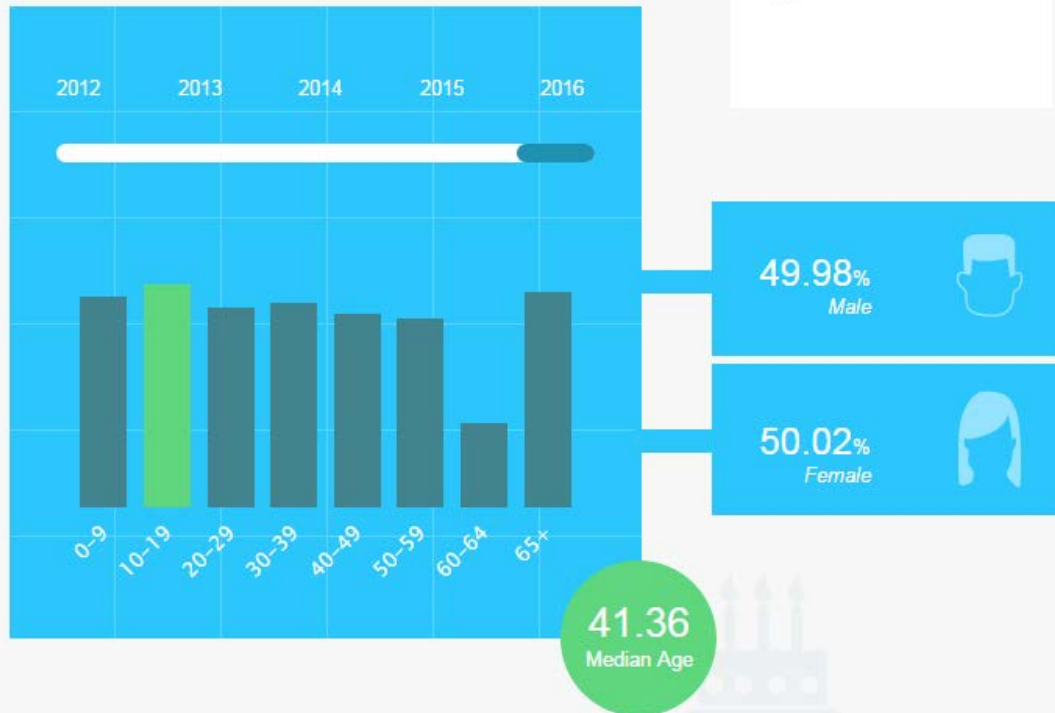
The total population of Region 3, South Western Idaho is 739,754. The median age is 41.36.



The population in Region 3, South Western Idaho has grown 7.17% since 2010.



Age Distribution



# Gem State Prospector Data

# EDUCATIONAL ATTAINMENT

The majority of the population in State of Idaho has completed at least a high school degree.

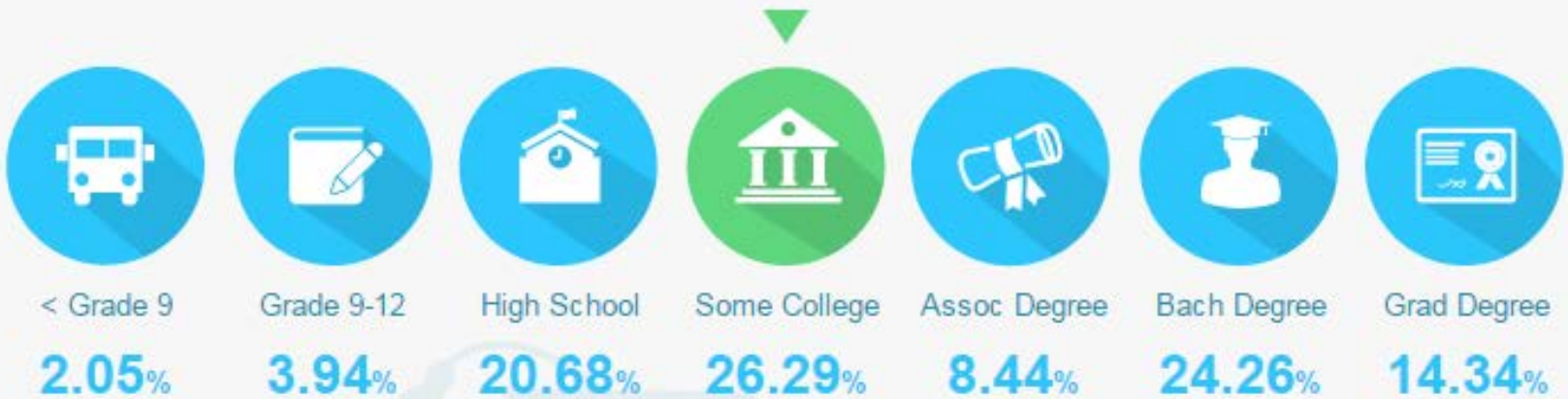


**34.74%**

of the population  
has a college degree.

# EDUCATIONAL ATTAINMENT

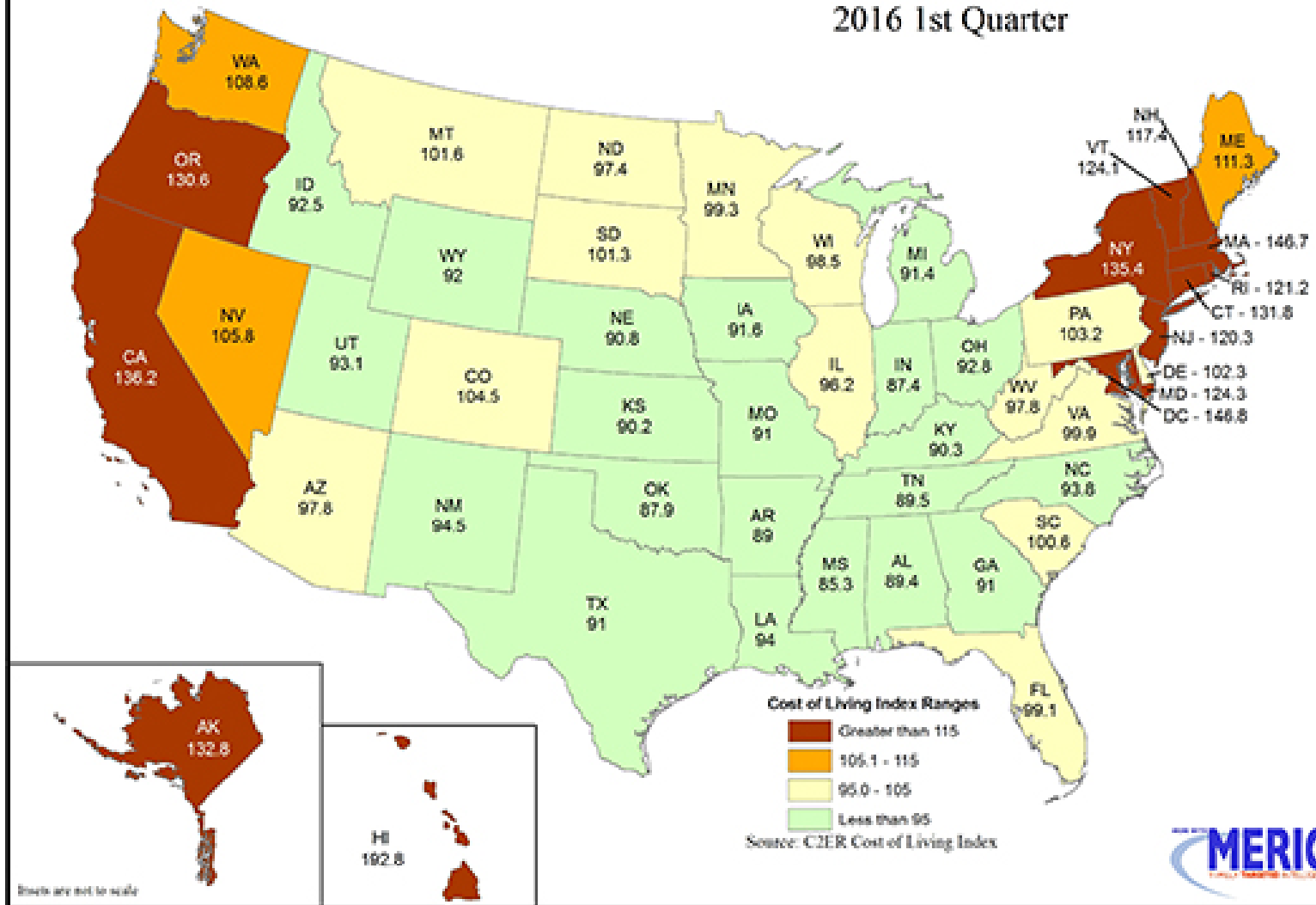
The majority of the population in Boise City has completed at least some college.



**47.04%**  
of the population  
has a college degree.

# Composite Cost of Living

## 2016 1st Quarter



# Tax Reimbursement Incentive

- Effective Date: July 1, 2014
- Up to 30% refundable tax credit for up to 15 years on all payroll, sales, & income taxes
- Performance-based incentive
  - Requires company to meet its job and wage commitments
  - Reimbursement of taxes paid

# TRI Impact To Date

Approved Projects:	28
Total Jobs:	4,386
Average Project Wages	\$45,271
Capital Investment:	\$655.9 million
Total Wages:	\$1.87 billion
New State Revenue:	\$208 million
Estimated Value of Credit:	\$47.97 million

**4:1 Return on Investment**

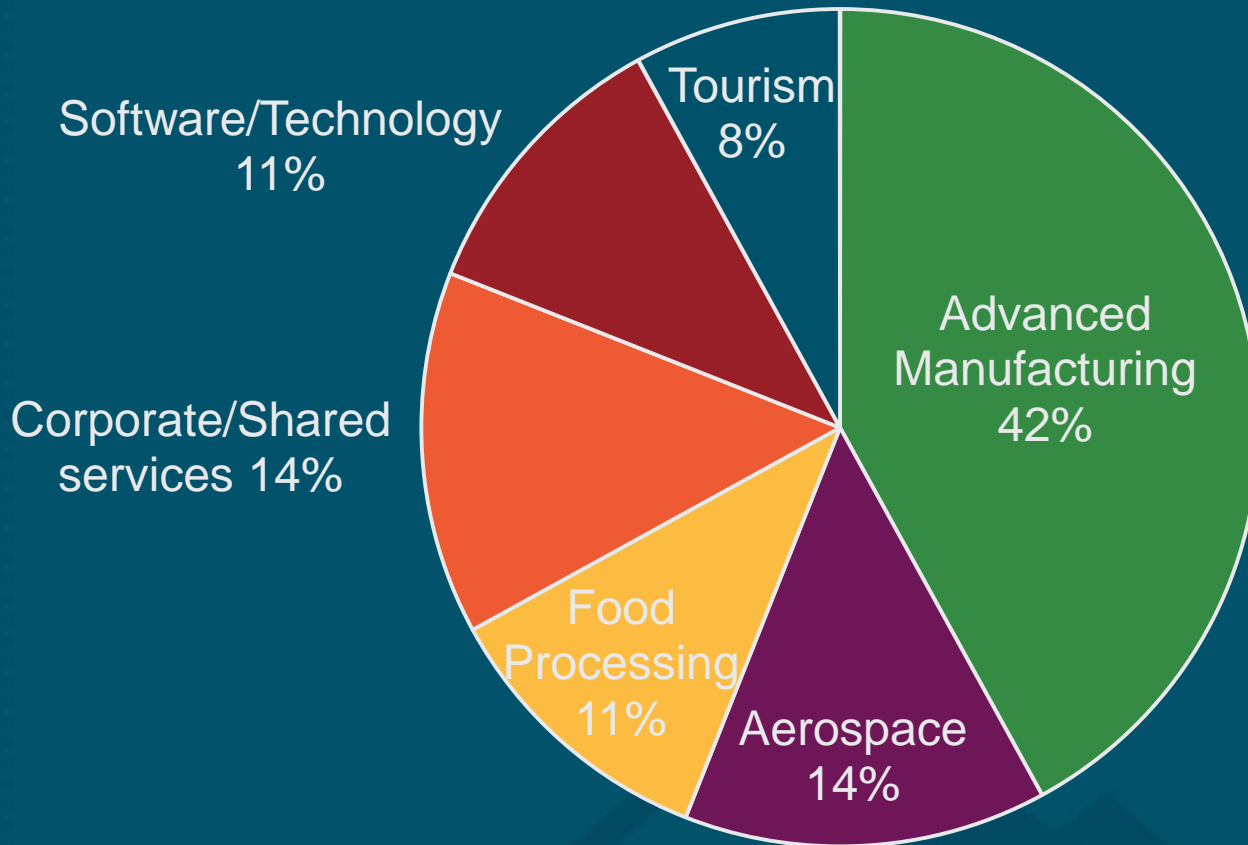
# TRI Statistics

Of the 28 approved TRI projects:

- 14 existing Idaho companies
- 14 companies new to Idaho
  
- 15 in rural communities
- 13 in urban communities

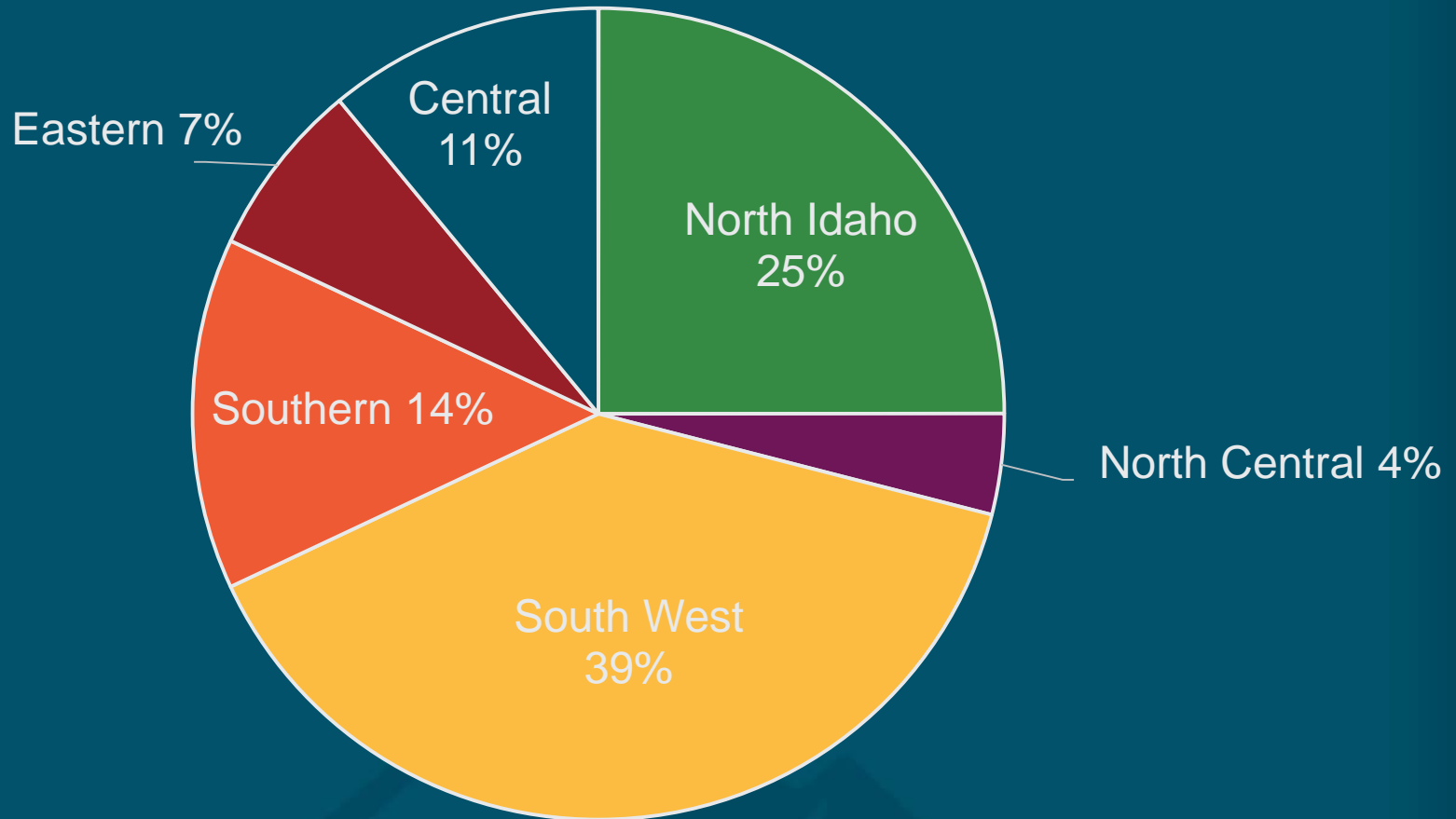
**Average Award = 22% for 10 years**

# TRI Statistics



# TRI Statistics

## Where projects located



**G**AYLE  
**M**ANUFACTURING  
**C**OMPANY

**SkyWest**  
AIRLINES®

**FK**® **Fabri-Kal**  
EXPERIENCE A BETTER PACKAGE.™

 **DFS** Diversified Fluid Solutions  
A Critical Process Systems Company



**ATC** Manufacturing, Inc  
ADVANCED THERMOPLASTIC COMPOSITES

 **QUEST**®  
A I R C R A F T

 **AGC** AeroComposites  
HAYDEN

*Solu*

 **ASPEN  
SNOWMASS.**

**KOCHAVA**★

*Amy's*  
We love to  
Cook for you.™

  
AUBERGE RESORTS  
COLLECTION

  
**glanbia**

 **HILEX**™  
A NOVOLEX BRAND

*paylocity* 

 **biomedical  
innovations**  
a Graphic Controls company

 **ATHLOS  
ACADEMIES**

**HEARTLAND**

Proposed  
**IDAHO**  
COLLEGE OF OSTEOPATHIC MEDICINE



[commerce.idaho.gov](http://commerce.idaho.gov)